

EMBRACE OUR COOLING FUTURE HOMA NEW NO-FROST DISTRICT

Homa



HOMA MANUFACTURING STORY



Q Review Key Moments of
Homa No-Frost District



Q Discover Homa Manufacturing Story

■ WELCOME

Welcome to the Homa new No-Frost District!

Serving the aspiration of our global clients, Homa Appliances is the world's leading premium manufacturer of cooling products and also provides exclusive cooling solutions services.

We have come a long way since our beginnings, in 2002, when we were only a small factory in the Guangdong Province, but with big ambitions, a strong mind and a clear vision, today we have built a production network comprising 10 production sites, recorded as No.1 Refrigerator Exporter for 15 years.

It is with great pride that we are introducing this brand new production hub to you, one of the most modern, smart, efficient and sustainable factories, an important milestone in Homa history by all means, shaping the future of our industry.

Let's explore the new chapter of Homa production story!

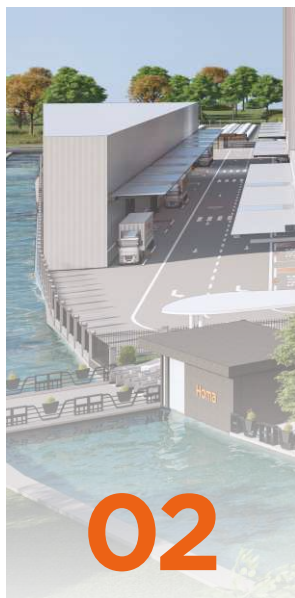


MAKE OUR DREAMS COME TRUE

■ CONTENTS



Introduction



Design Layout



Smart Management



Care Culture

01 OUR PRODUCTION STORY

When the ground-breaking ceremony of Homa's new industrial setup "No-Frost District" was held on 18th March 2021, we have made a clear target: to build the best production cooling hub dedicated to Homa's first 20 years, taking it as a new chapter for our company's production story and a spur to keep breaking new ground in the world of cooling.



2002

Homa Production Base 1

2007

Homa Production Base 2

2008

Homa Production Base 3

2012

Component Factory &
Homa Production Base 5

2015

Freezer Factory &
Homa Production Base 6

2018

Homa Production Base 7

2020

Parts Factory

2023

Homa No-Frost District

Located in the new manufacturing centre of Nantou Town, Zhongshan City, Homa's New No-Frost District has become an icon for made-in-China. The project is constructed with a mindset to maximise delivery efficiency while keeping the essence of the natural riverside scenery.

It is a contemporary industrial complex. These structures are interconnected by passageways, vividly adorned in the distinctive orange shade—the hue encapsulating Homa's passionate narrative about CARE. As we're fond of affirming, our avenue to excellence lies in innovative cooling appliances emerging from a thoughtful DESIGN thinking process and our unwavering commitment to delivering the best FOOD PRESERVATION. This is the new home where the heart and soul of our dedication will be stronger.



■ **72,000 m²**

Campus Floor Area
Only 4 km from Homa's headquarters

■ **170,000 UNITS**

Warehouse
Digital warehousing and logistics order management

■ **280,000 m²**

Building Area
Contemporary industrial complex

■ **16,000 m²**

Logistics Centre
Digital logistics management system

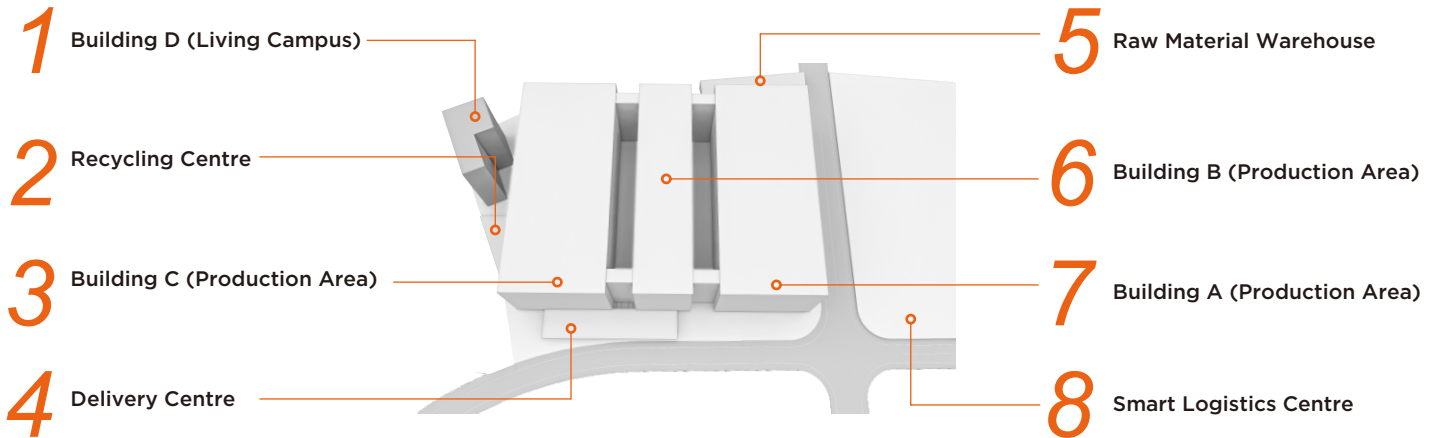
■ **2,500**

Job Opportunities
A well-facilitated "work-live-play" community

■ **3 MILLION UNITS**

Annual Production Capacity
The second phase construction will be completed in 2024





1 Building D (Living Campus)
 Work-live-play community with human-centred design, provides spaces for recreation and health

2 Recycling Centre
 Collection of recyclable materials and process them for secondary use

3 Building C (Production Area)
 The production kicked off at the end of 2023, for the big size no-frost products

4 Delivery Centre
 Digital process enables efficient delivery of finished goods to clients worldwide

5 Raw Material Warehouse
 Safe and well-organised management for chemical and non-chemical raw materials

6 Building B (Production Area)
 The production kicked off at the end of 2023, manufacturing components for big size no-frost products

7 Building A (Production Area)
 The second phase construction will be completed in 2024, which will increase another 1 million units capacity

8 Smart Logistics Centre
 Efficient and digital fleet management

02 DESIGN LAYOUT



C Building C (Completed)

The production kicked off at the end of 2023, for the big size no-frost products

B Building B (Completed)

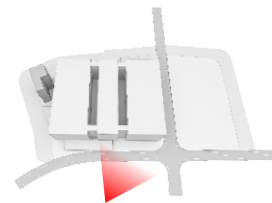
The production kicked off at the end of 2023, manufacturing components for big size no-frost products

A Building A (Under Construction)

The second phase construction will be completed in 2024, which will increase another 1 million units capacity

► East Gate (Main Entrance)

East gate is the main entrance, which will be finished in 2024 at the same time as building A. Once completed, the east gate will be mostly utilised for receiving guests, where we have reception, showroom and meeting rooms for a more pleasant plant tour experience.



EAST GATE (MAIN ENTRANCE)



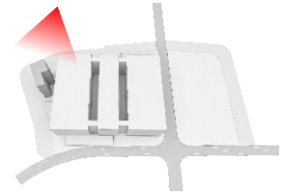
SHOWROOM



► South Gate

The south gate is connected to the riverside living campus and serves as the main passage for staffs to return home quickly from work.

With HUMAN-CARE design like separated sidewalks and driveways, staffs can cross the roads at ease.



SOUTH GATE

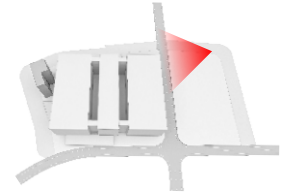


LIVING CAMPUS



► North Gate

The north gate is located opposite the smart logistics centre and is mainly used for raw materials management. The building on the right side are Homa's raw material warehouses. Via this gate, raw materials can quickly complete a series of processes such as loading, unloading, and warehousing.



NORTH GATE



RAW MATERIAL WAREHOUSE



DELIVERY CENTRE



SMART LOGISTICS CENTRE

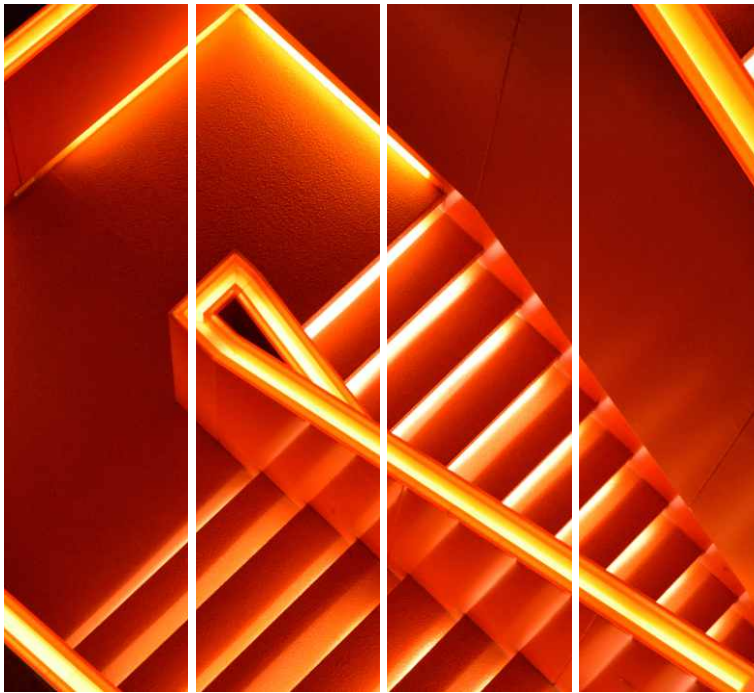


Digital process enables efficient delivery of finished goods to clients worldwide.



The smart logistics centre covers 16,000 m² where all vehicles are centrally managed safely and efficiently.

► Design Concept



SMART

LEAN

GREEN

CARE

SMART, LEAN, GREEN and CARE are the key words when we design our new no-frost district. The project team set the course for the construction at an early stage and consistently makes efficiency, sustainability and safety management central to its strategic direction, from the supply chain through production process to the end of the logistics phase.

03 SMART MANAGEMENT



► Digital Production Management

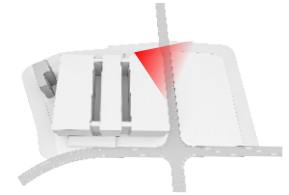
- Digital system allows the real-time production data tracking, smart raw material management and testing;
- Advanced machinery enables high automation level and production efficiency;
- The MES platform manages the whole circle of product from order to delivery, a step forward for Homa to explore the future of smart factory.



► Smart Logistics

There is a digital management system, and with the IoT and cloud computing and other technological means, the real-time transportation of vehicles will be updated to the system.

Each vehicle's parking, charging, unloading, loading, route and cargo plan, can be tracked and managed in the background.



LOGISTICS CENTRE



DELIVERY CENTRE



04 CARE CULTURE



► Living Campus

Our riverside living campus is a “work-live-play” community. Integrating recreation, fitness and study, the Homa way of CARE for our staffs!



RIVERSIDE WALKAWAY



ATHLETIC TRACK



HOMA GARDEN



BASKETBALL COURT



The 4,000m² garden consists of basketball & badminton court, athletic track, spin bikes, reading area and riverside walkaway. At the same time, the fruit trees and vegetables will be planted and nurtured by Homa people, and staffs and customers can enjoy the local harvest together.

LIBRARY



BILLIARD ROOM



GYMNASIUM



TABLE TENNIS COURT



Our living campus is equipped with a double-floor canteen, library, gymnasium, table tennis room and billiard room. We strive to provide our staffs with rich recreational activities after work.

► WLP (Work-Live-Play) Community



▶ WLP (Work-Live-Play)

LOW CARBON LIVING CAMPUS

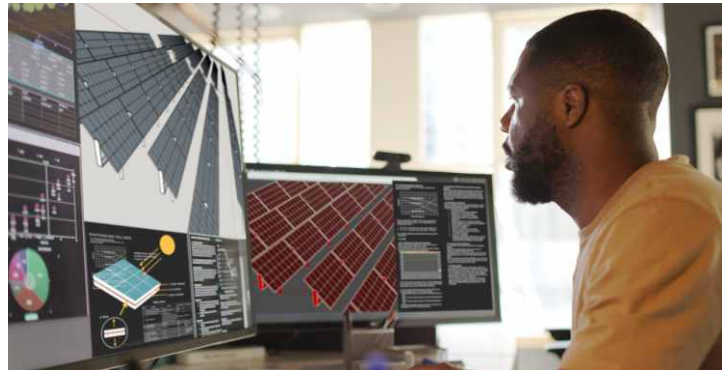
Homa has designed and created a work (factory)-live (campus)-play (recreation) community, so that our staffs can achieve work-life balance within the half-hour living circle.



▶ Low-carbon Design Philosophy

LEAN, GREEN, SMART & CARE FACTORY

Buildings account for nearly 40% of annual carbon emissions worldwide. In the design phase of new factory, Homa has set the goal of building a "lean, green, smart & care" factory, and makes sure this philosophy is applied throughout the process of construction. We installed solar photovoltaic panels, electric vehicle charging stations, 100% LED lighting and a specific recyclable & waste management area.





▶ SPECIAL THANKS

Our project team:

Bingxiao YAN	Bing LIANG	Cheng LIU
Chunliang KONG	Deqiang NI	Daqiang TANG
Dimin JIAN	En ZHANG	Guobin HUANG
Guanyu LI	Hui TANG	Jianhua YANG
Jinhong WEI	Jianshan HUANG	Lin ZHANG
Tianling HUANG	Wenhui LI	Xingxiu HAN
Yong FU	Yonghong YE	Yuhua HUANG
Yingwen LIANG	Zhengfeng TAN	Zhengwen SU
Zhonghua XI		

The second phase will be ready in 2024.
See you then.

Homa

The No.1 Refrigerator Exporter



Homa.cn



Homaeurope.eu



Instagram



LinkedIn



Youtube

Homa Appliances Co., Ltd.